

NONPROFIT IMPACT REPORT

POTTAWATOMIE COUNTY
AND SURROUNDING
COMMUNITIES

2024





KATHY LASTER, Ph.D., MBA
PRESIDENT AND CEO



Avedis Foundation is proud to present the 2025 Nonprofit Impact Report for Pottawatomie County and its surrounding communities in recognition of the invaluable role that nonprofits play in strengthening the communities they serve. As we pursue our Foundation’s vision, *to measurably improve the health, wellness and quality of life for the people of Pottawatomie County and its surrounding communities*, the Avedis board and staff share a deep sense of gratitude for these organizations which serve as the backbone of our communities’ local support systems.

Since our founding in 2012, Avedis has awarded more than \$70M in grants to assist nonprofits and organizations in our service area to further the important work of improving our communities’ health, wellness, and quality of life. Additionally, Avedis Foundation’s Nonprofit Leadership Roundtable serves as a vital platform for collaboration, bringing together nonprofit leaders each month to share best practices, discuss community challenges, and foster partnerships that enhance their collective impact. Through these partnerships, local nonprofit leaders gain insight into the most vital needs of our communities as they work together to mitigate innumerable challenges in nearly all facets of life.

The nonprofits highlighted on the following pages represent the front line of service to our communities every day. As Avedis celebrates the dedication and achievements of these organizations, the very real statistics within this report truly underscore the need for continued support to ensure that our nonprofit organizations can meet the growing demands of our communities. Their work is not just essential—it’s transformative.

A handwritten signature in blue ink that reads "Kathy Laster".

We're here for
good.

NONPROFIT IMPACT REPORT

POTTAWATOMIE COUNTY
AND SURROUNDING
COMMUNITIES

FOCUS AREAS SNAPSHOT

Ten areas of focus are highlighted in this report, representing critical needs within our communities. Additional details can be found in each organization's report in the following pages.



ADDICTION RECOVERY

Gateway to Prevention & Recovery serves individuals and families who have been affected by addiction and mental health disorders.

Jeremiah House is a 12-month recovery program for men facing addiction and mental health challenges; located in Chandler, OK.



Individuals served: 2,023
Days of sobriety: 3,522



ARTS AND CULTURE

Mabee-Gerrer Museum of Art offers diverse programs that connect people of all ages to the transformative power of art.



Individuals served: 3,805
Misc. programs: 400
After-school art classes: 73



CHILDREN AND FAMILY SERVICES

Community Renewal of Pottawatomie County offers programs designed to enhance relational health behaviors and provide valuable tools for children and adults in diverse settings including schools, neighborhoods, and businesses.

Hope Pregnancy Center offers education and support to women and men facing an unplanned pregnancy.

Legacy Parenting Center is a family resource center that partners with families to provide parent education, mentoring and social support, resources, and strategic community partnerships for wraparound services.



Individuals served: 5,063
Parent education minutes: 66,641
Baby necessities provided (diapers, wipes, clothes): 404,141



COMMUNITY ENRICHMENT

Pioneer Library System provides free resources, services and events to all ages to improve upward mobility, health, early literacy and school readiness.

Rose Rock Habitat for Humanity provides affordable housing and critical home repair services.

United Way of Eastern Frontier Country comprises a network of nonprofits that strengthen our community by mobilizing resources and collaboration.



Library visits: 999,051
\$225,000 granted to 21 United Way Partner Agencies



EMERGENCY POVERTY SERVICES

Central Oklahoma Community Action Agency helps low-income individuals and families avoid crisis situations by meeting emergency needs and helping families gain self-sufficiency.

The Salvation Army of Shawnee meets physical needs of individuals and families including emergency homelessness situations, after-school care for children, groceries, household utility costs, dinner, and other needs.



Meals served: 30,045 | Families served: 893 | Transit trips provided: 16,357



FOOD INSECURITY

Community Market of Pottawatomie County tackles food insecurity by offering client choice shopping experiences, mobile food pantries and nutrition education programs.



**Individuals served: 74,992
Pounds of food provided: 3.6M**



HEALTH AND WELLNESS

Pottawatomie Go (Pogo) promotes well-being in Pottawatomie County in an effort to achieve and sustain measurable health improvements.



**Steps taken during "Groove Around the Globe" Challenge: 39M
Community event participants: 1,500
CHNA survey responses: 3,176 *largest sample size in Oklahoma history
Healthy cooking demos: 100**



INDIVIDUALS WITH DEVELOPMENTAL DISABILITIES

South Central Industries (SCI) provides vocational training and occupational opportunities to individuals with developmental disabilities.



Jobs created: 107 | Hours employed: 52,216



VICTIM ADVOCACY SERVICES

Child Advocacy Center of Central Oklahoma provides services to alleged victims of sexual abuse, severe physical abuse, and to those who may be witnesses to violence or considered drug-endangered.

Project: SAFE provides advocacy, education, protective order assistance, emergency shelter, transportation, safety planning specialized counseling, and more for victims of domestic violence, sexual assault, stalking, and dating violence.



Individuals served: 1,900 | Forensic interviews: 380 | SANE medical exams: 36



YOUTH PROGRAMS

The Salvation Army Boys and Girls Club-Shawnee offers low-cost programming for children after school and during school breaks.

Scouting America-Last Frontier Council provides leadership, citizenship, physical development and character-building programs to prepare young people for life.

Uplift Mentoring connects mentors with children experiencing adversity to build meaningful relationships and help them realize their potential.



Individuals served: 3,673 | Meals provided: 14,355 | Achieved Eagle Scout: 9



Child Advocacy Center of Central Oklahoma
Established 2022

Strength for today, renewed hope for tomorrow.

WHO WE ARE

Child Advocacy Center of Central Oklahoma provides services to alleged victims of sexual abuse, severe physical abuse, and to those who may be witnesses to violence or considered drug-endangered.

CACCO is the only organization in Pottawatomie and Lincoln County to provide forensic interviews for children ages 3-17 or adults with a developmental disability, expert witness testimony upon request by prosecution, and Sexual Assault Nurse Examination (SANE) to children ages 0-17 or adults with developmental disabilities.

CACCO operates as a central response center, providing ongoing victim and family advocacy throughout the investigative and court processes. CACCO functions to improve the efficacy of multi-agency child maltreatment investigations and to foster collaboration among professionals who respond to cases of child maltreatment.



MISSION

To promote hope, healing, and justice for children by uniting public, private, and community partners.



VISION

Create a community where children are safe, families are empowered and hope is restored.



CORE VALUES

- Strengthening the community by offering safety, comfort, and hope to children and preventing child abuse.
- Advocating for justice, inclusion, and full community participation.
- Supporting families and empowering children.
- Putting children first in all that they do.
- Operating as a seamless team.



STRATEGIC PARTNERSHIPS

Pottawatomie County Commissioners	Oklahoma Department of Human Services
Lincoln County Commissioners	Shawnee Area Native American Child Protection Team
District 23 District Attorney's Office	Project: SAFE
Pottawatomie County Sheriff's Office	Uplift Mentoring
Lincoln County Sheriff's Office	



Kayxandra Campbell, Executive Director



131 N. Bell Ave. • Shawnee, OK 74801



405-585-2133



www.CACC-OK.ORG



For more information, scan here:



2024 HIGHLIGHTS

380

Forensic interviews conducted

400

Victim Advocacy Services

36

SANE (Sexual Assault Nurse Examination) medical exams provided



CACCO Board of Directors



 facebook.com/CACCOKLA

www.CACC-OK.ORG



2025 STRATEGIC GOALS AND INITIATIVES

1

Strengthen Community Partnerships;

2

Increase access to quality mental health services for victims and families;

3

Launch a capital campaign for permanent building for CACCO Services;

4

Develop and implement a child abuse prevention program.

CLIENT FEEDBACK

The staff created a very calm, warm, and welcoming atmosphere that put my child at ease almost immediately.

Everyone was very welcoming. Upon arrival, my child was nervous entering the facility. When we got to our holding room, it was very comfortable and set up with snacks and toys to instantly give him peace of mind, and it made him feel more comfortable.

Everyone has been incredibly kind and made us all feel comfortable being here, while also being very thorough in explanations so we know what to expect.



Established 1964

WHO WE ARE

Central Oklahoma Community Action Agency helps low-income individuals and families avoid crisis situations in two ways; meeting emergency needs first, then helping families gain self-sufficiency through supportive case management and partnerships with other social service providers.

The Community Action movement dates back to 1964 as part of the Federal Economic Opportunity Act. Community Action Agencies are locally managed with a volunteer board of directors that includes low-income people, public officials, and representatives from the community sector.



MISSION

Inspiring innovation, engagement, and learning in our communities.



VISION

Our customer service philosophy is to create positive experiences for you.



CORE VALUES

- Welcome
- Empower
- Respect

OUR IMPACT

Central Oklahoma Community Action Agency serves families and individuals throughout **Cleveland, Lincoln, Logan, Payne, Pottawatomie, and Seminole Counties**, providing Emergency Services, Prescription Assistance, Emergency and Transitional Housing, Utility Assistance, Medical Services, Clothing Assistance, Food Assistance, Case Management Services, Shoes for Children, and much more.



STRATEGIC PARTNERSHIPS

Legacy Parenting
COWIB
(Central Oklahoma
Workforce Innovation Board)
Workforce Oklahoma
LifeChurch



Tracy Izell, Executive Director



2 E. Main St. • Shawnee, OK 74801



405-275-6060



www.cocaa.org

For more information,
scan here:





2024 HIGHLIGHTS



9,970 meals served
7,915 volunteer hours



994 pairs of shoes
1,780 pairs of socks
29 participating schools



Housing Projects

1 rental unit in Norman
25 rental units in Shawnee
12 rental homes in Shawnee
4 rental units in Wewoka



COCAA's total funding:
\$1,905,201.34
through Nov. 2024



PEDIATRIC CARE • SUPPORTING • PARENTING

2,097 Visits
262 Referrals



COTS: Central OK
Transit System
16,357 passenger trips



Assistance for prescriptions



71 taxes prepared

Emergency Services:

- 893 families received services
- Rent and utility assistance
- Emergency/Transitional Housing
- Medical and vision services
- Food, clothing, transportation





Until there are no hungry homes.

WHO WE ARE

Community Market tackles food insecurity across Pottawatomie, Seminole, and Lincoln counties by offering:

- Client choice shopping experiences
- Mobile food pantries
- Nutrition education programs

Fresh, nutritious food is central to our mission. We prioritize providing access to healthy options that might otherwise be unavailable to our community members. Our commitment to rural residents fuels our work. From nourishing children through school backpack programs and summer feeding initiatives to bringing mobile markets to seniors in their communities, we strive to ensure food access for everyone at every stage of life.

Driven by the belief that no one should go hungry, we work tirelessly to lower food insecurity and provide access to fresh, healthy food for families in need in our community.



MISSION

Feeding the hungry in our community and providing connections that enable lasting change.



VISION

A community where no one is hungry, and everyone has access to nutritious foods.



CORE VALUES

- Vitality
- Innovation
- Stewardship



STRATEGIC PARTNERSHIPS

Regional Food Bank of OK
Hunger Free Oklahoma
Legacy Parenting Center
OSU Extension
Community Renewal
COEDD
SSM Health - St. Anthony
Shawnee Hospital



Daniel Matthews, Executive Director



120 S Center St. • Shawnee, OK 74801



405-788-4957



www.ourcommunitymarket.org

For more information,
scan here:





2024 HIGHLIGHTS

Total meals:
3,026,420 meals

Total service:
**26,535 families,
74,992 Individuals**

Total pounds:
3.6 million

Launched:
**3 Senior Mobile
Market sites** in

- Shawnee
- Seminole
- Tecumseh

Expanded:
educational programming

Adapted:
programming for more
**holistic health and
well-being outcomes**

 [facebook.com/
@ourcommunitymarketof
pottawatomiecounty](https://facebook.com/ourcommunitymarketofpottawatomiecounty)

 [communitymarketpc](https://communitymarketpc.org)

www.ourcommunitymarket.org



2025 STRATEGIC GOALS AND INITIATIVES

1

Launch fourth Senior Mobile Market site;

2

Further expansion into rural communities;

3

Increase case management for clients;

4

Additional in-house and multimedia client education opportunities;

5

Age-to-age service expansion.





Established 2015

We Care.

WHO WE ARE

Community Renewal of Pottawatomie County believes in the inherent potential of communities to be agents of their own renewal. By empowering families with the relational tools, knowledge, and support they need, we facilitate a bottom-up approach to community building. This grassroots methodology aligns with our vision of creating a network of strong, interconnected communities where every individual has the opportunity to thrive.

Our programs are designed to enhance relational health behaviors and provide valuable tools for children and adults in diverse settings, including schools, neighborhoods, and businesses. Our in-school programming provides risk-appropriate prevention services tailored to meet a range of student needs. Our adult programming uses similarly themed curricula, offered through programs like Friendship House, to provide opportunities to families in disadvantaged neighborhoods to build community, seek support, and find mentorship.



MISSION

Community Renewal provides comprehensive relational health education for children and adults.



VISION

We are passionately committed to making the Shawnee area a model of relational renewal, where every resident feels connected, valued, and empowered to contribute to the well-being of their community.

1,392

Number of kids receiving campus-wide character enrichment programming

10.68 days

average reduction of school absences for students in Elevate classes

78%

reduction in suspensions among students in Elevate classes



STRATEGIC PARTNERSHIPS

Absentee Shawnee Housing Authority

Gateway to Prevention and Recovery

Legacy Parenting Center

Shawnee Public Schools and Jim Thorpe Academy



Brandon Dyer, Executive Director



1000 N. Kickapoo St. • Shawnee, OK 74801



405-273-1035



www.communityrenewal.org

For more information, scan here:





2024 HIGHLIGHTS

- Awarded **\$1.2 million** in government contracts to strengthen and expand programming;
- Launched **"Everyday Dads,"** a new state-funded fatherhood mentoring program;
- Completed our third school-based, trauma-informed parenting cohort, **"Parenting for Positive Self-Worth";**
- Launched first **satellite Family Resource Center** at Shawnee Early Childhood Center in partnership with Legacy Parenting Center and Gateway to Prevention and Recovery.



Everyday Dads group with mentors



facebook.com/
communityrenewalpc



community_renewal

www.communityrenewal.org



2025 STRATEGIC GOALS AND INITIATIVES

1

Launch a second Elevate class at Shawnee High School for opportunity youth, taught daily during 1st hour by Community Renewal staff;

2

Double our adult programming impact by expanding relational health education opportunities and support groups;

3

Achieve 100% high school graduation rate for students enrolled in **Elevate**, a program for teens who are chronically absent from school and are in danger of losing the ability to graduate.

"While I was going through all this, my stepmom was in and out of jail for doing things to keep food on the table and clothes on our backs. My bio mom had been locked up for manslaughter for a majority of my life. My dad was constantly working 7 days a week and wasn't around much. Going through all that and not having that mother figure to talk and communicate with made it hard for me to cope."

— Bre, student from Elevate class



Since 2016, more than 1,900 kids have been served in school-based clubs



gateway

To Prevention & Recovery

Established 1984

Expect Hope

WHO WE ARE

Gateway is dedicated to serving individuals and families who have been affected by addiction and mental health disorders. Our prevention, treatment, and wellness programs bring health, hope, and healing to the communities we serve.



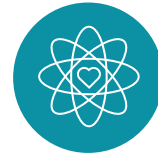
MISSION

Supporting all individuals and families in Oklahoma toward recovery and greater health through prevention, treatment, and wellness.



VISION

Expect hope.



CORE VALUES

- Every life has value
- Meet people where they are
- Teams are more effective
- Local people solve local problems
- People support what they help create
- Act with intention
- Support and challenge

OUR METRICS

Evaluation and sustainability are parts to all our prevention programming.

We utilize the **Strategic Prevention Framework** model for many of our programs.

- Service delivery times:** Time from intake to first session
- Utilization rates:** Percentage of completed vs no shows or cancellations
- Client feedback:** Quality of services • Waiting times • Outcomes
- Staff:** Sessions completed • Caseload size • Admin vs direct care time



STRATEGIC PARTNERSHIPS

Avedis Foundation:

- Executive Director Nonprofit Roundtable

Family Resource Center:

- Partnership with Legacy Parenting
- Community Renewal



Jon Greenwood, Executive Director



36605 W. 45th St. • Shawnee, OK 74804



405-273-1170



www.gatewaytoprevention.org



For more information, scan here:



2024 HIGHLIGHTS

- Continued progress on **new facility/move** in early 2025;
- **Expansion** of adolescent and transitional youth programs;
- **Increase** in licensed behavioral health professionals to staff;
- Expansion of **Medically Assisted Treatment** clinic;
- **Received funding** for expansion of prevention services to additional counties;
- Started **equine therapy** services

Served more than
2,000
clients in 2024

Served clients from
15
counties in OK

Approximately
650
clients are active
anytime.



2025 PRIMARY FOCUS

1

Complete expansion of new facility

2

Continue increasing/expanding mental health services

3

Expand equine therapy services

4

Expand harm reduction programming



Gateway volunteers

 [facebook.com/
GatewaytoPrevention](https://facebook.com/GatewaytoPrevention)

www.gatewaytoprevention.org



Building homes, community, and hope.

Established 1993

WHO WE ARE

Rose Rock Habitat is a 501(c)3 whose mission is to provide affordable housing to South Central Oklahoma. We use a combination of grants, private donors, and sales at the ReStore to serve those in our community.



MISSION

The Mission of Rose Rock Habitat for Humanity is to put God's love into action by bringing people together to build homes, community, and hope.



VISION

Our vision is a world where everyone has a decent place to live.



CORE VALUES

Lead with C.A.R.E.

- Character
- Attitude
- Respect
- Empowerment



STRATEGIC PARTNERSHIPS

Absentee Shawnee Housing Authority

Gateway to Prevention and Recovery

Legacy Parenting Center

Shawnee Public Schools and Jim Thorpe Academy



Randall Gardner, Executive Director



4901 N. Kickapoo, Suite 3001 • Shawnee, OK 74804



405-585-0062



www.rosrockhabitat.org

For more information, scan here:





2024 HIGHLIGHTS

4,395

Individuals received financial education

169

Emergency home repairs completed

11

Residential ramps constructed

2

Community clean-ups completed in 2024

Opened
Shawnee ReStore
4901 N. Kickapoo Ave.



facebook.com/
therestoreshawnee

therestoreshawnee

www.roserockhabitat.org



2025 STRATEGIC GOALS AND INITIATIVES

1

Build or refurbish 5-6 houses in Pottawatomie County; construct 3-4 ramps;

2

Continue to respond to critical home repair requests within Pottawatomie County;

3

Continue to host and grow **The Gingerbread Village** as Shawnee's premier winter event;

4

Expand financial literacy outreach and training to help all of aspects of the community.



Delivering the right home improvement products, with the best service and value, across every channel and community they serve.



Established 1985



Established in Shawnee 2023

WHO WE ARE

Hope Pregnancy Center is an affiliate of Oklahoma Baptist Homes for Children, a nonprofit ministry which began in 1903, impacting the lives of families and children across the state.

Hope helps women and men who are facing an unplanned pregnancy to choose life. Services include medical grade pregnancy testing, ultrasound, pregnancy option education, parenting classes, adoption education and referrals, and community referrals for housing, support, etc.

Hope's trained staff and volunteers offer education and support. Our desire is to encourage, affirm dignity and self-worth, and provide positive alternatives for individual situations and needs. Every person is treated with strict confidentiality and respect in a non-judgemental, non-discriminatory manner.



MISSION

To help young women and men have hope and choose life in the midst of an unplanned pregnancy.



CORE VALUES

- Respect
- Integrity
- Gift of Life
- Home
- Together



STRATEGIC PARTNERSHIPS

Legacy Parenting Center

Local health departments of Pottawatomie, Lincoln, Seminole and surrounding counties

Local churches
Project: SAFE



Dee Ann Schroyer, Director



318 W. Highland • Shawnee, OK 74801



405-585-0693



www.thinkimpregnant.org

For more information,
scan here:





2024 HIGHLIGHTS

140+

clients served in 2024 with pregnancy tests, ultrasounds, and education

Purchased a new building at 1829 N. Kickapoo Ave. in Shawnee to serve as our new location, offering more space for our **baby boutique** and **training** area.

When asked to rate their visit on a scale of 1 to 5, with 5 being highest, 94% of the women who receive a pregnancy test at Hope give a rating of 5 on their Exit Survey.



facebook.com/
HopePregnancyCentersOklahoma

www.thinkimpregnant.org



2025 STRATEGIC GOALS AND INITIATIVES

1

Remodel and relocate to our new center on Kickapoo Avenue;

2

Introduce fatherhood mentoring program;



“Everyone was very friendly. I was nervous about coming in, but the way I was treated made me glad I came. I like that I could open up to someone about personal experiences. I’ll recommend Hope to others.”

— Hope client

jeremiah house

Your door to *hope, sobriety,*
and a *new beginning*

Established 2020

WHO WE ARE

Jeremiah House is a faith-based, 12-month recovery program for men facing addiction and mental health challenges. Located in the rural community of Chandler, OK, in Lincoln County, we address a critical need in an area where addiction-related suicides per capita surpass those of Oklahoma City and Tulsa.

Our program provides safe housing for up to eight men during their recovery journey and an additional four in our graduate house, offering continued support as they transition into independent living. At Jeremiah House, we focus on healing the whole person—mind, body, and spirit—empowering men to reclaim their lives and build a future of hope and stability.



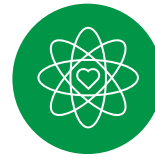
MISSION

To build and restore the lives of men experiencing addiction through recovery, faith, encouragement and service to others.



VISION

To equip men with a positive pathway of hope, giving them the opportunity to gain knowledge of independent living skills, coping skills, sobriety, spirituality, work ethic, and housing, to increase their outlook on life and being a member of their community.



CORE VALUES

- Spirituality
- Counseling
- Meditation
- 8-Hour sleep pattern
- Mentors/sponsors
- Exercise/diet
- Work therapy



STRATEGIC PARTNERSHIPS

Avedis Foundation
Oklahoma Alliance for Recovery Resources
Gateway to Prevention and Recovery
Red Rock Behavioral Health
Muscogee (Creek Nation)
Sac and Fox Nation
Citizen Potawatomi Nation



Michael Bateman, Founder/CEO



343016 E 980 Rd. • Chandler, OK 74834



405-206-2710



www.jeremiahhouseok.org

For more information,
scan here:





2024 HIGHLIGHTS

- **Graduation** of four individuals who successfully progressed through the four phases of the program;
- Successful **fundraising**;
- Formation of several **new partnerships** that enhance our mission;
- Increased **name recognition**, attracting more clients interested in our program.
- Secured a solid foundation for our future growth with the **purchase of 4.5 acres**, just south of Chandler, OK.

23

Clients served

33%

Retention rate in 2024

3,522

Collective days of sobriety among men participating in the program in 2024

 facebook.com/jeremiahhouseok.org

 [@jeremiahhouseok](https://www.instagram.com/jeremiahhouseok)

www.jeremiahhouseok.org



2025 STRATEGIC GOALS AND INITIATIVES

1

Continue to grow our program to embrace and support **recovery and mental health challenges** for the men we serve;

2

Expand our **programming** to include hands-on work such as lawn care business, developing a workshop, and exploring new landscaping opportunities;

3

Launch a **campus expansion campaign**, which will include a chapel, workshop, greenhouse, and gardening structures;

4

Broaden our fundraising efforts through initiatives like our **"Boots for Hope"** night, pursuing grant opportunities, and engaging the community for increased public support through individual donations.





Established 2015

Empowering Parents. Impacting Generations.

WHO WE ARE

Legacy Parenting Center, a member of the Oklahoma Family Support Network, is a Family Resource Center located in Shawnee, OK. Legacy partners with families from pregnancy through age five, a child's most formative years of life.

Legacy builds stronger, healthier families through the Strengthening Families Protective Factor Framework. Through parent education, both individualized and groups, as well as mentoring and social support, resources such as diapers and clothing, and strategic community partnerships for wraparound services, parents are empowered to be successful, and children are protected from child abuse and neglect.



MISSION

Building stronger, healthier families through education, resources, and mentoring.



VISION

Empowering Parents.
Impacting Generations.



CORE VALUES

- Relationships
- Integrity.
- Excellence.

“I feel a lot less alone in my struggles in figuring out parenthood. Thanks to the help from The Legacy Store, we can afford to pay our bills and pay for food comfortably.” - Dakota



STRATEGIC PARTNERSHIPS

Community Market
Community Renewal
CHNA Task Force
Gateway to Prevention & Recovery
Project SAFE
PottCo Health Department



Lacey Holt, Executive Director



126 S. Center St. • Shawnee, OK 74801



405-432-2844



www.legacyshawnee.com



For more information,
scan here:



2024 HIGHLIGHTS

994

Babies served

151,897

Donated diapers

379,374

Diapers distributed

544

Families participated in
Earn While You Learn
Parent Education

\$309,914

Worth of resources distributed
through **The Legacy Store**

More than 70 businesses and community partners joined us for National Diaper Need Awareness Week, **collecting**

50,000+

diapers - our largest diaper drive to date.

Became a member of the
Oklahoma Family Support Network.

Became one of eight agencies in OK to be an **official Family Resource Center** through the Potts Family Foundation Know & Grow Initiative.

Added our **Wonder Years Program** - for 3 to 5 year olds.

Secured three-year funding from **OSDH Choosing Childbirth Act.**

 [facebook.com/
legacyparentingcenter](https://facebook.com/legacyparentingcenter)

 [@legacyparentingcenter](https://instagram.com/legacyparentingcenter)

www.legacyshawnee.com

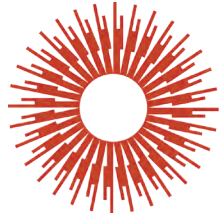


2025

STRATEGIC GOALS AND INITIATIVES

- Implement **Protective Factors Assessments** with new families enrolling in our program, providing more tailored support for wraparound services (ie: counseling, education, transportation);
- Addition of **Nurturing Parenting** group classes;
- Provide **diapers for up to 100 babies a month** in Seminole through the **Community Market** mobile distribution partnership;
- Provide **diapers to 150 babies** of low-income families through the federal Diaper Distribution Demonstration Research Pilot;
- Assist at least five mothers with obtaining their **GED** through partnership with **Citizen Potawatomi Nation WorkForce Development**;
- Partner with 25 families for our **Wonder Years** (preschool) program;
- Connect at least **15 families to Parents as Teachers** at Legacy or community partners such as Center for Children & Families or Youth & Family Services;
- Provide **parent education and support for 500 families** in Pottawatomie, Seminole, and Lincoln Counties.





MABEE-GERRER

MUSEUM OF ART

Bringing the World to Oklahoma

Established 1919 • Incorporated 1990

WHO WE ARE

The Mabee-Gerrer Museum of Art offers diverse programs that connect people of all ages to the transformative power of art. From free school field trips like "Start with Art" to inclusive initiatives like Mosaic Mondays for neurodivergent participants, we create accessible, enriching experiences for all. Our Creative Aging programs engage seniors through workshops and activities that foster lifelong learning and social connection. Popular events such as Art Mania, Mummy Day, and annual exhibitions bring families and communities together to explore art, history, and culture. At MGMoA, we inspire creativity, celebrate diversity, and nurture a passion for learning across generations.



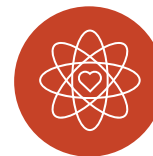
MISSION

Enriching Lives through Art



VISION

By serving as a community center for Shawnee, the Mabee-Gerrer Museum of Art draws a diverse audience of frequent visitors who find common ground between the Museum's resources and their individual and shared values.



CORE VALUES

- Education
- Community
- Experience
- Stewardship

OUR IMPACT

1,062

In-person field trips

742

Virtual field trips

576

Docent-led tours

52

Self-guided tours

73

After-school art classes

400

Miscellaneous programs



STRATEGIC PARTNERSHIPS

Mabee-Gerrer partners with Oklahoma schools and universities, counseling agencies, art organizations, foundations, community nonprofits, other museums and art centers



Dane Pollei, Executive Director



1900 W. MacArthur St. • Shawnee, OK 74804



405-878-5300



www.mgmoa.org

For more information, scan here:





2024 HIGHLIGHTS

Art Mania: Over 643 participants joined this free program, providing hands-on art experiences to children and families without access to basic art supplies.

Mosaic Mondays Launch: A new, inclusive program designed specifically for neurodivergent students and adults, promoting accessibility and creativity.

Gala Fundraising Milestone: Successfully raised funds through the "Canvas and Couture" Gala, supporting educational programs and exhibitions.

Creative Aging Expansion: Introduced engaging workshops and activities for seniors.

Grant Achievements: Secured funding from the Oklahoma Arts Council ARPA fund (\$90,602.72) and multiple program-specific grants.

Mummy Day Attendance
A record-breaking turnout of more than 900 .



facebook.com/mgmoa



mabee_gerrer_museum_of_art

www.mgmoa.org



2025 STRATEGIC GOALS AND INITIATIVES

1

Expand Mosaic Mondays program for neurodivergent students.

2

Grow Creative Aging Initiatives program for our senior community.

3

Increase and diversify exhibitions.

4

Expand membership program.

5

Strengthen community connections.

6

Enhance marketing and visibility.





Established 1958

Reimagine your library. Stay curious.

WHO WE ARE

Pioneer Library System (PLS) is your award-winning library system serving Cleveland, Pottawatomie, and McClain County for nearly 70 years. Providing free resources, services, and events to all ages, PLS is the heart of this community. We dedicate ourselves improving upward mobility, health, early literacy and school readiness, community conversations and engagement, and STEAM skills for everyone in central Oklahoma. We are your 2023 Oklahoma Library of the Year.



MISSION

Inspiring innovation, engagement, and learning in our communities.



VISION

Our customer service philosophy is to create positive experiences for you.



CORE VALUES

- Welcome
- Empower
- Respect

2024 Highlights

- PLS opened the Library Lab, a new library concept complete with a Maker Lab, popular rotating collection, and children's programs, in response to the temporary closure of Norman Public Library Central.
- PLS hosted nationally recognized authors, like actress Tembi Locke, to hold community conversations around her book "From Scratch" and the topic of resiliency.
- Five new Maker Labs opened in Noble, Shawnee, Moore, Southwest Oklahoma City, and Norman's Library Lab, providing state-of-the-art technology to the public, like 3D printers, laser cutters, embroidery machines, and more.

Inspiring innovation, engagement, and learning in our communities.



STRATEGIC PARTNERSHIPS

Dolly Parton's Imagination Library/OK State Imagination Library

OK Dept. of Education

Shawnee Public Schools

Junior Service League



Lisa Wells, Executive Director



300 Norman Center Court • Norman, OK 73072



405-801-4500



www.pioneerlibrarysystem.org

For more information, scan here:



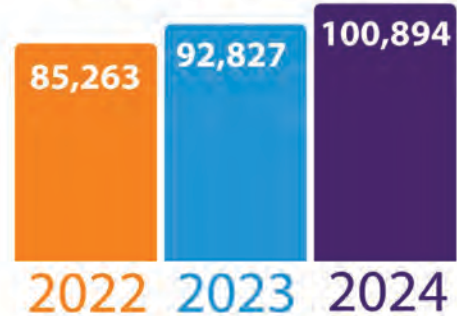


2024 HIGHLIGHTS

287,758 Cardholders



Active Cardholders



999,051 Visits



Total Circulation:
2,227,326



2,700,551
Tablet, Computer,
& Laptop Use



4,555 Total Programs
100,252 Total Program Attendance



24,962 Total Public Meetings
70,659 Total Public Meeting Attendance



228 Schedule a Librarian appointments



423,283 Online Resource Sessions

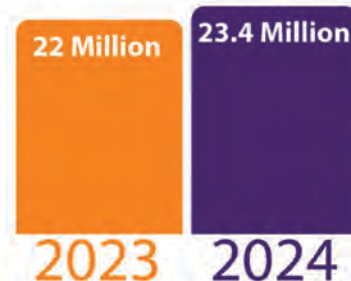


62,700 Wi-Fi Sessions



1,048,490 Website Visits
by 407,701 Users

Summer Learning Minutes



facebook.com/
pioneerlibrarysystem



pioneerlibrarysystem

www.pioneerlibrarysystem.org

Pottawatomie go

Established 2022

Live a Little. *Longer.*

WHO WE ARE

Pottawatomie go (Pogo) makes healthy options easier and partners with like-minded organizations to advance our county's health and well-being. By promoting well-being in Pottawatomie County as a Certified Blue Zones Community, Pogo is a collaborative community effort to achieve and sustain measurable health improvements to help everyone in our community "Live a little. *Longer.*"



MISSION

We facilitate collaborative partnerships and foster engagement in healthy initiatives to measurably improve the health and well-being of Pottawatomie County.



VISION

Pottawatomie County is the healthiest county in Oklahoma!



CORE VALUES

- Collaboration
- Inclusion
- Empowerment
- Courage
- Vitality
- Innovation
- Accountability



STRATEGIC PARTNERSHIPS

AARP Oklahoma
Absentee Shawnee Tribe
Know & Grow Oklahoma
OU Hudson College of Public Health
RETREET
(Keep America Beautiful)



John Bobb-Semple, Executive Director



420 E Main St. • Shawnee, OK 74801



405-698-1308



www.gopogo.org

For more information,
scan here:





2024 HIGHLIGHTS

1,500

Community members participated in a Pogo-sponsored event

40

Organizations collaborated in our initiatives

1,300

Hours contributed by volunteers

3,176

surveys completed during the 2024 Community Health Needs Assessment (CHNA)

60+

CHNA distribution partners

1,000

Mental well-being directories distributed to the community

85

Organization and business leaders attended the Worksite Well-being Summit

100

Cooking demonstrations conducted in the community to promote healthy eating habits

39M

Collective steps (equivalent to 17,042 miles) taken by 229 participants in the Groove Around the Globe Steps Challenge



facebook.com/
PottawatomieCountyGo



go.pogo



pottawatomie-go-a-
bzip-certified-community

www.gopogo.org



2025

STRATEGIC GOALS AND INITIATIVES

1

Launch publicly accessible Pottawatomie County health dashboard to provide data driven insights for improving community health and well-being while communicating progress ;

2

Lead the creation of Pottawatomie County's first Community Health Improvement Plan (CHIP), setting a collaborative vision for a healthier county;

3

Celebrate the Good: roll out the "Tell Me Something Good" campaign to spotlight uplifting stories and strengthen community pride;

4

Expand Countywide Collaboration: build bridges beyond Shawnee by cultivating partnerships that extend Pogo's impact across Pottawatomie County;

5

Restore Tree Canopy: successfully execute the RETREET program, transforming landscapes and fostering resilience through reforestation efforts that benefit generations to come.





WHO WE ARE

Project: SAFE's mission is to provide advocacy for Safety, Empowerment, Healing and Freedom from abuse.

Our services include advocacy, education, protective order assistance, emergency shelter, transportation, safety planning, specialized counseling, and more for victims of domestic violence, sexual assault, stalking, and dating violence.

Our shelter operates 24/7 and can be accessed through our Crisis Hotline at 800-821-9953. We also provide targeted outreach to local communities, as well as provide multiple volunteer and internship opportunities.



MISSION

The mission of Project: SAFE is to provide advocacy for Safety, Empowerment, Healing and Freedom from abuse.



VISION

The vision of Project: SAFE is to advocate for victims of abuse, to raise awareness of violence, empower survivors, and create a community that stands against domestic violence, sexual assault, stalking, and dating violence.



CORE VALUES

- Integrity
- Empowerment
- Respect
- Stewardship
- Partnership



STRATEGIC PARTNERSHIPS

Iowa Tribe
Sac & Fox Tribe
Coordinated Community
Response Teams of Pottawatomie and Lincoln Counties



Renée Clemmons, Executive Director



313 N. Union St. • Shawnee, OK 74801



405-273-9953



www.projectsafekok.org

For more information,
scan here:





2024 HIGHLIGHTS

• Raised approximately \$165,000 through the success of our annual **Honey Do Auction and Fundraiser**;

• Added a second **Sexual Assault Victims' Advocate**. This program has historically had only one Advocate due to funding.

125

Individuals housed in shelter

20.1

Average length of stay, in days

23%

Increase in number of new clients from previous year

1,500+

Unduplicated clients served across all programs

 facebook.com/ProjectSafe

 [@projectsafeshawnee](https://www.instagram.com/projectsafeshawnee)

www.projectsafefok.org



2025 STRATEGIC GOALS AND INITIATIVES

1

Finalize ADA renovations at the administrative office and Freedom House shelter to accommodate individuals with disabilities;

2

Continue to pursue new funding opportunities that will provide direct client assistance for domestic violence, sexual assault, and stalking;

3

Expand outreach to area youth and young adults about healthy relationships, red flags, and emotional and physical safety through community support groups and presentations.

"My stay at Project Safe has positively impacted me and my children's lives. If it wasn't for Project Safe, I'm scared to think that I would still be in a horrible situation just withering away."

"Because of this organization, I was helped, and freedom is now mine."

"I can honestly say that if my advocate hadn't been there to listen to me and tell me life gets better, I don't know if I'd be here a year later to write this."

"I am a success story because of Project Safe."

"I want to thank Project Safe and my advocate for giving me the tools to know and understand what abuse and victimization is so that I can continue the healing process and continue applying what I learned in future relationships."

"Project Safe helped us so much that words can not express how grateful I am. The staff were so caring and comforting."

"Thanks to Project Safe, I am not a victim but a survivor of life."





DOING THE MOST GOOD®

Established 1901

Doing the Most Good®

WHO WE ARE

The Salvation Army of Shawnee meets physical needs of individuals and families today to give hope for tomorrow, physically and spiritually, whether it is a place to stay in emergency homelessness situations, after-school care for children, groceries, household utility costs, dinner, and other needs in the community.



MISSION

The Salvation Army, an international movement, is an evangelical part of the universal Christian Church. Its message is based on the Bible. Its ministry is motivated by the love of God. Its mission is to preach the gospel of Jesus Christ and to meet human needs in His name without discrimination.



VISION

To meet human needs in His name without discrimination.



CORE VALUES

- Passionate
- Compassionate
- Uplifting
- Brave
- Trustworthy



STRATEGIC PARTNERSHIPS

Avedis Foundation
Citizen Potawatomi Nation
Community Market
Habitat for Humanity
Life Church
United Way Frontier Country



Ian Carr, Corps Officer



200 E 9th St. • Shawnee, OK 74801



918-841-1425



www.southernusa.salvationarmy.org/shawnee



For more information,
scan here:



2024 HIGHLIGHTS

We fed, on average, **55 individuals** dinner **every single night of 2024** - that is **20,075 meals** to those in need at our Shawnee shelter.

For many, a meal or two a week is **the difference** in paying their bills. We have had parents reach out to see what we are feeding to help plan their groceries for the week. For many on a fixed income, saving on meal costs for just a couple of days a week gives them the opportunity to focus that income on other bills or needs for their family, which can be **life-changing**.

2,744

Individuals served in Shawnee

46,691

Meals served to the hungry throughout the greater community

2,591

Food boxes provided

5,675

Nights of shelter provided

3,360

Gifts distributed at Christmastime



2025 STRATEGIC GOALS AND INITIATIVES

Our main focus for 2025 is building long-term case management with those who are transitioning out of our shelter, away from homelessness, growing life outcomes and successfulness in their lives by connecting them with community partners and other nonprofits across the community.



facebook.com/SalArmyShawnee
www.southernusa.salvationarmy.org/shawnee



Established 1989

Great Futures Start Here

WHO WE ARE

Boys and Girls Club - Shawnee offers a low-cost program for after-school and school breaks, including summer. We pick up from most schools in the Shawnee area during the school year. We provide a healthy snack and dinner, and our programs center on healthy lifestyles, character and leadership, and academic success. We aim to serve those who need us the most and allow their families quality time together when they are home.



MISSION

To enable all young people, especially those who need us most, to reach their full potential as productive, caring, responsible citizens.



VISION

To create a world class Club experience that assures success is within reach of every young person who enters our doors, with all members on track to graduate from high school with a plan for the future, demonstrating good character and citizenship, and living a healthy lifestyle.



CORE VALUES

- Integrity
- Collaboration
- Accountability
- Respect
- Excellence

OUR IMPACT

- Over **73%** of members are eligible for **free or reduced lunch**;
- **100%** of youth report **being on grade level** for their age;
- Over **90%** of youth report they expect to **graduate high school**;
- **74%** expect to **graduate college**;
- **90%** of youth report having **healthy lifestyles**.



STRATEGIC PARTNERSHIPS

Citizen Potawatomi Nation
 OSU Extension Office -
 Pottawatomie County
 Panda Express
 Regional Food Bank of OK
 Tecumseh Public Schools



Julio N. Sanchez, Club Director



200 E 9th St. • Shawnee, OK 74801



405-698-1308



[facebook.com/bgcshawnee](https://www.facebook.com/bgcshawnee)



[facebook.com/bgcshawnee](https://www.facebook.com/bgcshawnee)



For more information,
scan here:



2024 HIGHLIGHTS

- Successfully completed the ESSER grant that **funded our extended program** in South Pottawatomie County at Tecumseh Public Schools for three years;
- Served **277** youth;
- Provided a **safe space for youth** to have fun and grow during out of school time;
- Served **15 different schools**;
- Provided **14,355 meals**;
- **14,377** youth interactions



2025 STRATEGIC GOALS AND INITIATIVES

1

Continue to provide a quality program for the young people in our community who need us most;

2

Provide transportation to after-school for more members;

3

Serve 220 youth

“The after-school program puts my mind at ease because I know they’re safe and out of trouble.”

— Spring Cleveland, parent





South Central Industries

GROWING TOMORROW'S OPPORTUNITIES FROM TODAY'S CHALLENGES

Established 1981

Dignifying Differences

WHO WE ARE

South Central Industries is an Oklahoma-based 501(c)3, woman-run organization that provides vocational training and occupational opportunities to more than 50 individuals with developmental disabilities. Two group homes are located on the South Central campus that provide housing for 12 of these individuals, offering residential services and social outlets that help them realize their maximum potential.

South Central's job offerings include city beautification, janitorial, lawn care, pallet construction and product sales. South Central strives to meet vocational and residential needs, as well as to foster relationships and community outreach.

South Central has received national recognition for its social entrepreneurship model, yielding a result of 96.3% self-sustainability. Adhering to its mission of providing employment and residential opportunities and services to individuals with IDD, South Central has developed mission-aligned business models that provide above minimum-wage paying work opportunities and constructed affordable housing for low-income and individuals with IDD.



MISSION

To provide vocational training, employment opportunities, residential services, and social outlets to help their clients, or "PEEPs" (People Experiencing Exceptional Purpose), become independent, self-determined, and productive.



VISION

Growing Tomorrow's Opportunities from Today's Challenges



CORE VALUES

- Respect
- Support
- Resource



STRATEGIC PARTNERSHIPS

Department of Rehabilitation

Oklahoma Commerce

Oklahoma Community-based Providers

OK Department of Corrections



Tina Hanna, CEO



204 N Louisa Ave. • Shawnee, OK 74801



405-275-3851



www.southcentralind.com



For more information, scan here:



2024 HIGHLIGHTS

People with intellectual or developmental disabilities are often seen as less capable. Many live under a shadow of low expectations and limited opportunities, fueled by stereotypes and stigmas.

1

Develop more housing and utilize CHDO;

2

Continue to grow vocational opportunities for PEEPs; expand sales territory for PEEPs

52,216

hours of employment provided to 50+ individuals with intellectual and developmental disabilities

3,978

community volunteer hours donated by PEEPs at SCI

107+

jobs created for the local economy

324

social activities

120,000

vocational hours

350

medical appointments

40,000+

medicine administrations

130

volunteers



2025 STRATEGIC GOALS AND INITIATIVES

**PEOPLE
EXPERIENCING
EXCEPTIONAL
PURPOSE**



SOUTH CENTRAL INDUSTRIES DIGNIFYING DIFFERENCES



facebook.com/southcentralindustries

south-central-industries

www.southcentralind.com

Scouting America

Last Frontier Council

Established 1921

Prepared. For Life.®

WHO WE ARE

Scouting America is the largest youth serving organization for the whole family that provides leadership, citizenship, physical development and character building programs to prepare young people for life.



To prepare young people to make moral and ethical decisions throughout their life by instilling in them the values of the scout oath and law:

On my honor, I will do my best to do my duty to God and my country and to obey "the scout law". To help other people at all times. To keep myself physically strong, mentally awake, and morally straight.

The Scout Law: a Scout is Trustworthy, Loyal, Helpful, Friendly, Courteous, Kind, Obedient, Cheerful, Thrifty, Brave, Clean and Reverent



VISION

To give every youth in our area the opportunity to receive the blessings and promises of Scouting.



Scouting America

Last Frontier Council



CORE VALUES

- Foundation of the Scout Oath and Law for all decisions;
- Fun, safe environment;
- Strengthen financial across all levels of Scouting;
- Recruit an army of volunteers to meet the needs of youth



STRATEGIC PARTNERSHIPS

Community Businesses;

Public and private schools;

Civic Clubs
(Rotary, Kiwanis, Lions...)



Steven Choate, District Director



3031 NW 64th St. • OKC, OK 73116



405.840.1114



www.scoutingrocks.tv



For more information,
scan here:



2024 HIGHLIGHTS

Achieved third straight year of membership growth since 2020.

Nine local scouts achieved the highest rank of Eagle.

235

Scouts in the service area, ages 5-17

15

Units: packs, troops, and crew

1,365

Bags of popcorn sold

\$27,300

Amount raised from popcorn sales in fall of 2024

\$6,400

Amount raised from Spring Card sales of 640 cards

7,070

Pounds of non-perishable food collected and distributed to 8 local food pantries during the Fall Food Drive



facebook.com/
LastFrontierCouncil



lfcscouting



LFCBSA

www.scoutingrocks.tv



2025 STRATEGIC GOALS AND INITIATIVES

1

Scout Oath and Law foundations for everything we do;

2

Provide captivating outdoor adventure opportunities;

3

Excellent fiscal management, development and fundraising are in place; Opportunities for efficiencies and new income and revenue streams are continually explored;

4

Through traditional and innovative program delivery methods and strategic community collaborations the organization is growing in numbers and diversity of scouts served (Scouting is embraced by our communities);

5

Inspirational and caring army of volunteers and staff: our organization and programs are led by talented volunteers at all levels; the Council maintains a staff of highly qualified, talented and motivated individuals.



UNITED WAY

Eastern Frontier Country

LIVE UNITED

EST. 1947

WHO WE ARE

United Way is a network of nonprofits, strengthening our community through mobilizing resources and collaboration.



MISSION

The United Way of Eastern Frontier Country strengthens communities by mobilizing resources to collaborate for the common good.



VISION

The United Way of Eastern Frontier Country envisions a community where all individuals achieve their best potential in all areas of their lives.



CORE VALUES

- Community
- Giving
- Accountability



STRATEGIC PARTNERSHIPS

American Red Cross, Child Advocacy Center, Boy Scouts of America, Central Oklahoma Community Action Agency, Community Market, Community Renewal, Youth and Family Resource Center, Gateway to Prevention & Recovery, Heartline, Legacy Parenting Center, Legal Aid Services, Pottawatomie County 4-H, Project SAFE, The Salvation Army, The Salvation Army Boys & Girls Club, Shawnee YMCA, Uplift Mentoring, Girl Scouts, Pioneer Library System, South Central Industries, Volunteer Health Clinic



Sandy Vanderburg, Executive Director



415 E. Main St. • Shawnee, OK 74801



405-273-4012



www.unitedwayefc.org



For more information,
scan here:



2024 HIGHLIGHTS

- Granted **\$225,000** to support **21 nonprofit partner agencies** in our local community;
- Established the **Pottawatomie County Long Term Recovery Group** which has provided **over \$250,000** to date to help individuals recover from the Shawnee Tornado;
- Launched **Dolly Parton's Imagination Library** in Seminole and Hughes Counties.



[facebook.com/unitedwayefc](https://www.facebook.com/unitedwayefc)

[@unitedwayefc](https://www.instagram.com/unitedwayefc)

www.unitedwayefc.org



2025 STRATEGIC GOALS AND INITIATIVES

1

Launch RIDE UNITED in Shawnee;

2

Raise \$375,000 for annual campaign.

OUR IMPACT

From advancing a healthy community, youth opportunity, and financial security to strengthening local resiliency, United Way mobilizes communities to action so all can thrive.

HEALTHY COMMUNITY

We improve access to nutritious food and quality health education and services so people have the resources they need to lead healthy lives. Together, we can improve health and well-being for all.

YOUTH OPPORTUNITY

We create pathways for young people to reach their goals, from early childhood education to college and career success. Together, we help young people realize their full potential.

FINANCIAL SECURITY

We connect people to education, tools, and job training so they have financial freedom and peace of mind. Together, we can create a stronger financial future for every generation.

COMMUNITY RESILIENCY

We help communities prepare for, prevent, and respond to challenges, from crisis support and disaster relief to environmental protection. Together, we can address urgent needs today for a better tomorrow.

UPLIFT MENTORING

Established 2006

Mentoring with a Mission

WHO WE ARE

Uplift Mentoring is a 501(c)(3) nonprofit that exists to educate and equip individuals through mentoring relationships rooted in the love of Christ. We recruit, train, and connect mentors with children experiencing adversity to build meaningful relationships and help them realize their God-given potential. In Pottawatomie County, one in three children is growing up without a mentor. Our vision is to close the mentoring gap present in our community through 1-to-1 mentoring relationships.



MISSION

To educate and equip individuals through mentoring relationships rooted in the love of Christ.



VISION

To close the mentoring gap in Pottawatomie County.



CORE VALUES

- Christ-centered love and service
- Integrity and accountability
- Empowerment through connection
- Collaboration and community impact

OUR IMPACT

The mentoring relationships created through Uplift Mentoring impact a variety of individuals, including mentees, mentors, parents, teachers, and athletic coaches. Uplift Mentoring partners with 10 schools across our community.

3,161

Since launching our mentoring initiative in 2016, Uplift Mentoring has impacted **3,161 children** through 1-to-1 mentoring relationships in Pottawatomie County.

80%

Of teachers surveyed, **4 out of 5** stated that they had witnessed a change in their students as a result of having a mentor.

92%

92% of serving mentors said they had connected with their mentee and built a meaningful relationship through their time together.



STRATEGIC PARTNERSHIPS

Uplift partners with multiple schools, counseling agencies, churches, and other nonprofits to evaluate the needs in Pottawatomie County for at-risk children.



Ryan Brooks, Executive Director



126 S Center St. • Shawnee, OK 74802



405-802-8318



www.upliftmentoring.org

For more information,
scan here:





2024 HIGHLIGHTS

In 2024, Uplift Mentoring launched the **MVP Initiative** (Mentors with Vision and Purpose, a 1-to-1 in-school **peer mentoring program** designed to train and equip high school student-athletes to become mentors to at-risk, incoming middle school students. Each high school mentor is matched with a mentee at the beginning of the year and meets with the same mentee throughout the school year to cultivate a **positive, meaningful relationship**, highlighting daily practices and other strategies that will help them develop a healthy, positive mindset.

Uplift Mentoring **trained and matched 114 mentors** with children in Pottawatomie County in 2024.

Renovations to our facility were completed in 2024 to engage children through interactive, therapeutic spaces.

 facebook.com/upliftmentoringok

 [@uplift.mentoring](https://instagram.com/@uplift.mentoring)

www.upliftmentoring.org



2025 STRATEGIC GOALS AND INITIATIVES

1

Expand the **MVP Initiative** to three new school districts in Pottawatomie County.

2

Enlist **100 new mentors** through existing and new mentoring initiatives.

“Our football athletes who participated in the Uplift Mentoring MVP Initiative the first semester showed growth in self-awareness and their ability to impact a younger person’s life. I recommend any coach or athlete become involved with the program, not only to help sixth graders, but to grow a deeper understanding of oneself in guiding a younger generation. I definitely see a change happening in our team culture over the next few seasons because of our participation with the Uplift MVP Initiative at Shawnee Middle School.”

— Jason Madonna
Shawnee High School Head Football Coach





The information contained in this report has been provided by the nonprofit organizations included in the report. Every effort has been made to produce accurate summary reporting of 2024.



2024 NONPROFIT IMPACT REPORT